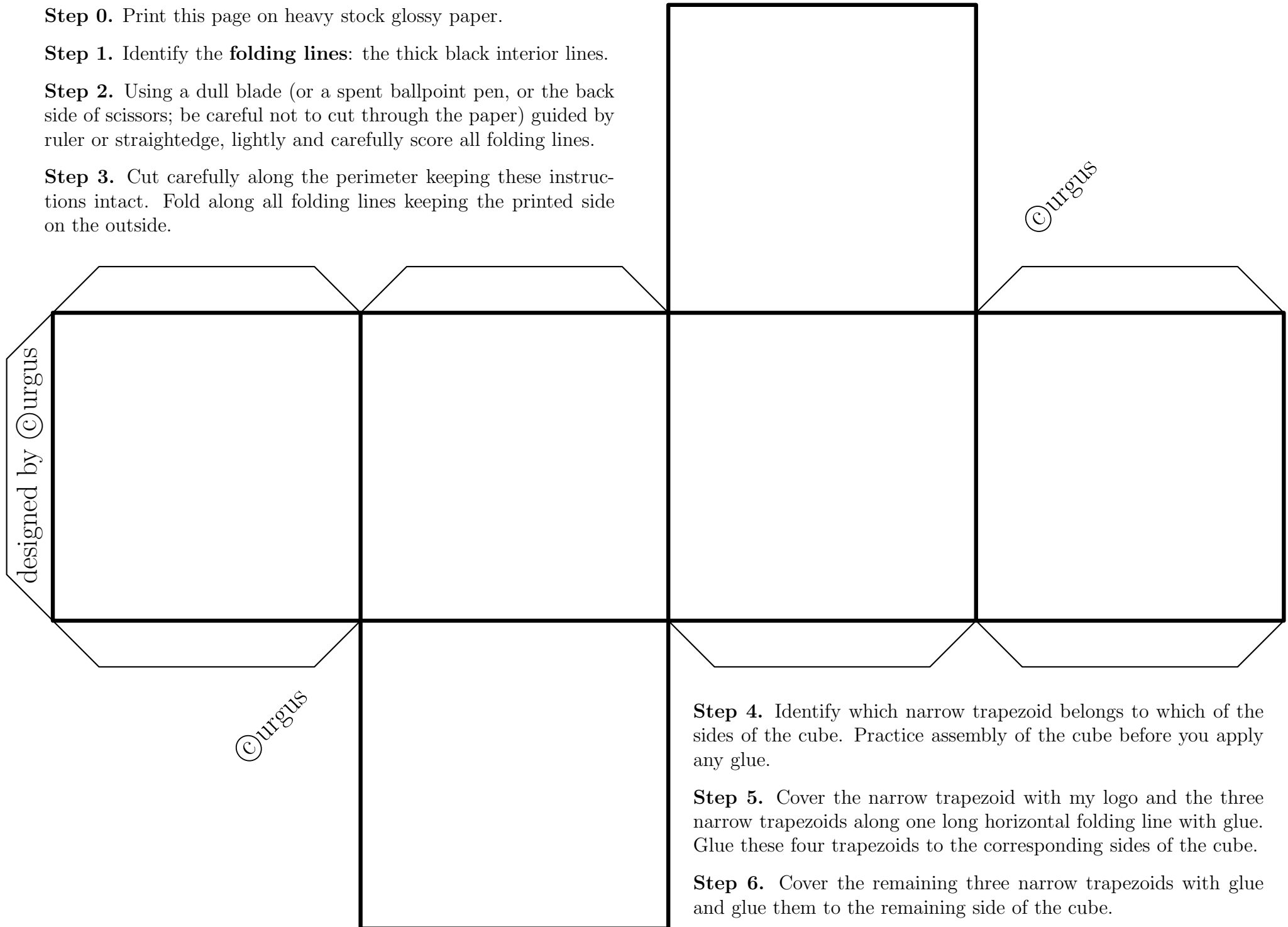


Step 0. Print this page on heavy stock glossy paper.

Step 1. Identify the **folding lines**: the thick black interior lines.

Step 2. Using a dull blade (or a spent ballpoint pen, or the back side of scissors; be careful not to cut through the paper) guided by ruler or straightedge, lightly and carefully score all folding lines.

Step 3. Cut carefully along the perimeter keeping these instructions intact. Fold along all folding lines keeping the printed side on the outside.



Step 4. Identify which narrow trapezoid belongs to which of the sides of the cube. Practice assembly of the cube before you apply any glue.

Step 5. Cover the narrow trapezoid with my logo and the three narrow trapezoids along one long horizontal folding line with glue. Glue these four trapezoids to the corresponding sides of the cube.

Step 6. Cover the remaining three narrow trapezoids with glue and glue them to the remaining side of the cube.