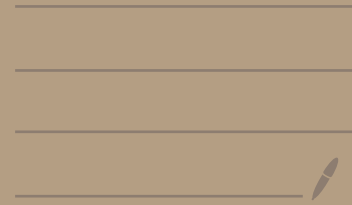


# Limit at $+\infty$

---

## Motivation



Comment on Sami's post of today.

Recall the def of max.

$S \subseteq \mathbb{R}$ ,  $S \neq \emptyset$  (nonempty set)

$$u = \max S \Leftrightarrow \begin{array}{l} \textcircled{1} u \in S \\ \textcircled{2} \forall x \in S \quad x \leq u \end{array}$$

---

Sami's Trick Let  $A, B \subseteq \mathbb{R}$ ,  $A, B$  nonempty.

Assume that  $a = \max A$  and  $b = \max B$

Then  $\max(A+B) = a+b$

---

Def.  $A, B \subseteq \mathbb{R}$ , nonempty.

By def  $A+B = \{x+y : x \in A \wedge y \in B\}$

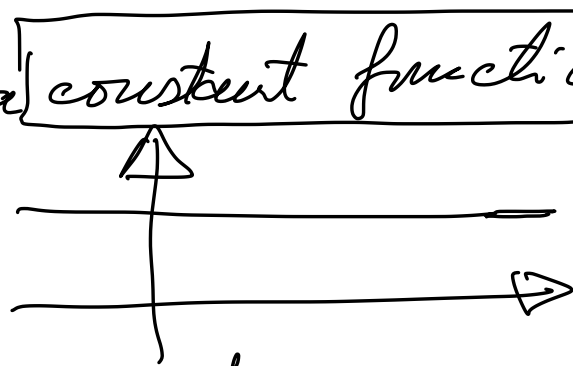
Try to prove this — You can do it! 

How does the definition of limit emerge?

(My answer!)

How would you define a constant function?

$f: A \rightarrow B$  codomain  
domain



Definition

$\exists c \in B$  s.t.  $\forall x \in A \quad f(x) = c$

Practise negation:  $\forall c \in B \quad \exists x \in A$  s.t.  $f(x) \neq c$

What does the phrase "eventually constant" mean?  
We can do this only for real functions  $s, A, B \subseteq \mathbb{R}$

Say  $f: \underline{\underline{D}} \rightarrow \mathbb{R}$  where  $D \subseteq \mathbb{R}$   
 $D \neq \emptyset$

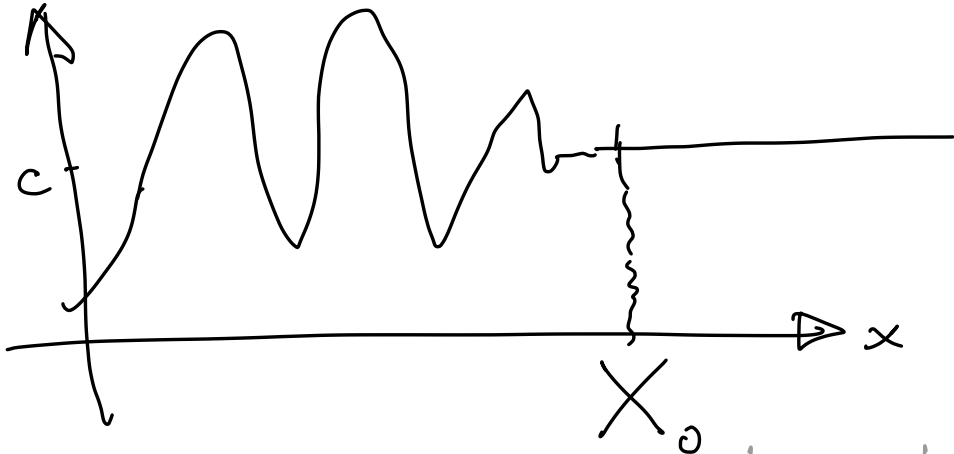
Def. eventually constant

$\exists c \in \mathbb{R}$  s.t.

$\exists X_0 \in \mathbb{R}$  s.t.

$\forall x > X_0$  we have

$$f(x) = c$$

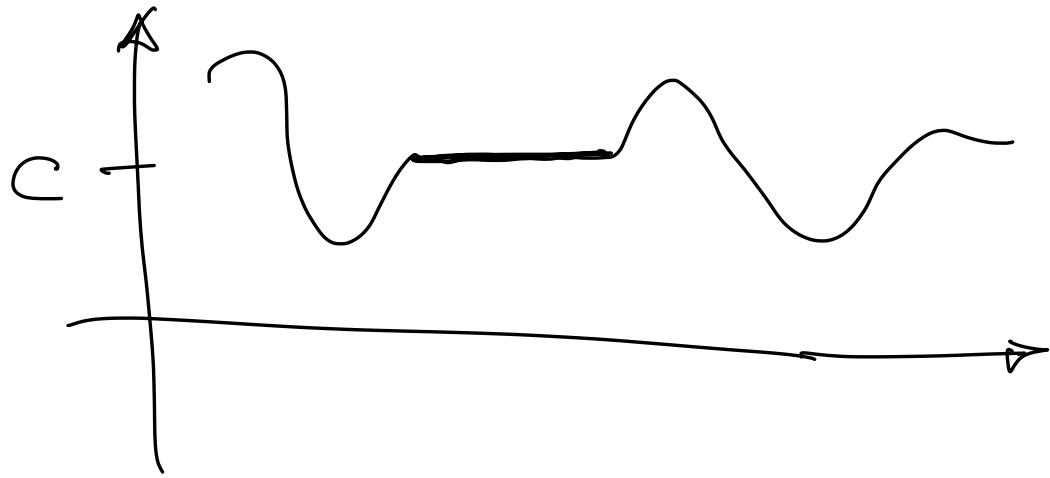


In order for this def to make sense I must have  $[X_0, +\infty) \subseteq D$

---

sgn, ns, ... not many functions like this.  
Let us play with made-up word: (informally)  
"constautish" (meaning: like a constant)

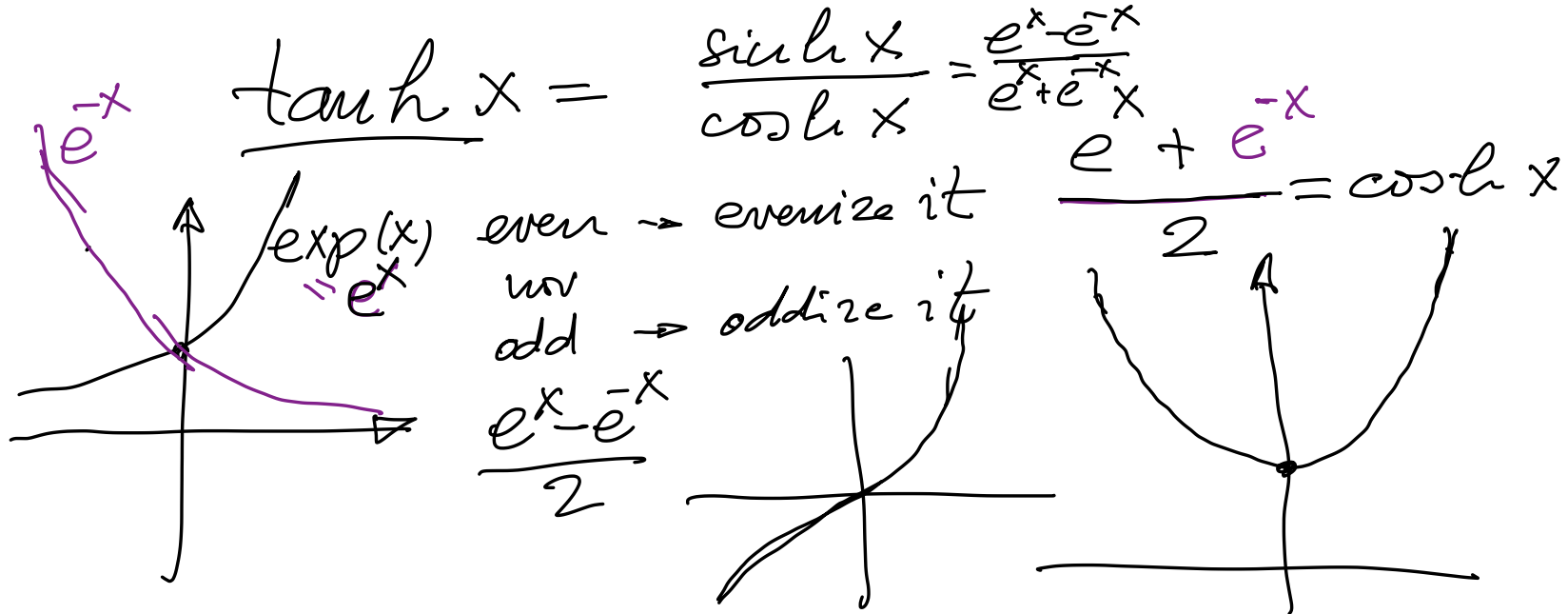
one way of understanding



comment on chat

oscillation implies

would include this



$\boxed{\tanh 8 = 1}$

$\frac{e^8 - e^{-8}}{e^8 + e^{-8}}$